

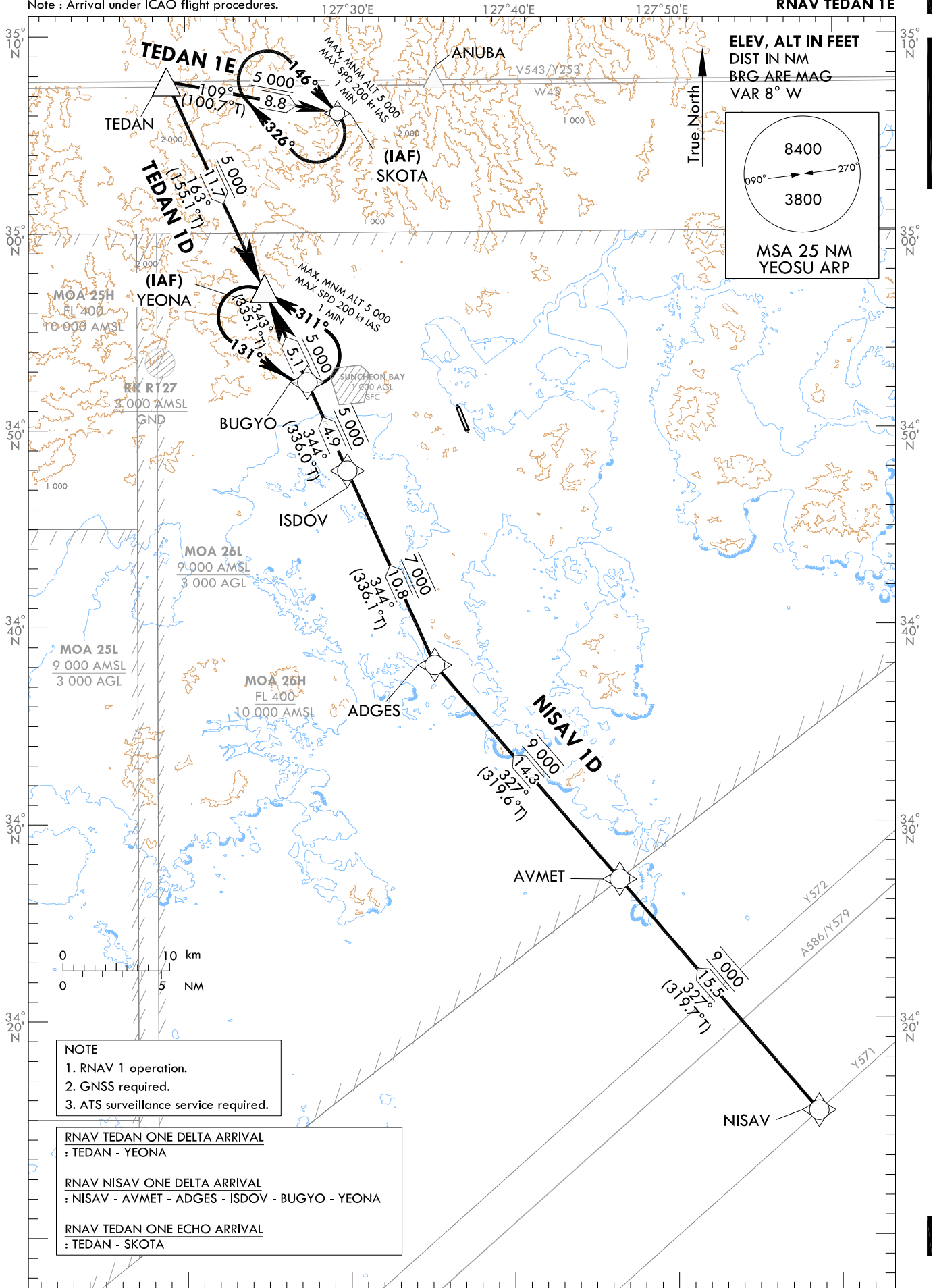
**STANDARD ARRIVAL CHART  
INSTRUMENT(STAR) - ICAO**

TRANSITION ALT 14 000  
TRANSITION LVL FL 140

SACHEON APP 135.4  
YEOSU TWR 122.5  
240.9

**YEOSU/Yeosu(RKJY)  
RWY 17**  
RNAV TEDAN 1D, RNAV NISAV 1D  
RNAV TEDAN 1E

Note : Arrival under ICAO flight procedures.



Change : Establishment of standard instrument arrival procedure(RNAV TEDAN 1E).

YEOSU/Yeosu(RKJY)  
RWY 17

RNAV TEDAN 1D, RNAV NISAV 1D

RNAV TEDAN 1E, HOLDING PROCEDURE

AERONAUTICAL DATA TABULATION

Standard Instrument Arrival Procedure Coding Tables

RNAV TEDAN 1D												
Serial Number	Path Descriptor	Waypoint Identifier	Fly-over	Course/Track °M(°T)	Distance (NM)	Turn direction	Altitude (ft)	Speed (kt)	Coordinates	VPA/RDH	Navigation specification	Remarks
001	IF	TEDAN	-	-	-	-	-	-	35°07'43.8"N 127°18'52.1"E	-	RNAV 1	-
002	TF	YEONA	-	163(155.1)	11.7	-	+5 000	-	34°57'03.8"N 127°24'52.1"E	-	RNAV 1	IAF

RNAV NISAV 1D												
Serial Number	Path Descriptor	Waypoint Identifier	Fly-over	Course/Track °M(°T)	Distance (NM)	Turn direction	Altitude (ft)	Speed (kt)	Coordinates	VPA/RDH	Navigation specification	Remarks
001	IF	NISAV	-	-	-	-	-	-	34°15'19.1"N 127°58'35.0"E	-	RNAV 1	-
002	TF	AVMET	-	327(319.7)	15.5	-	@9 000	-	34°27'07.6"N 127°46'29.4"E	-	RNAV 1	-
003	TF	ADGES	-	327(319.6)	14.3	-	@9 000	-	34°38'03.0"N 127°35'14.0"E	-	RNAV 1	-
004	TF	ISDOV	-	344(336.1)	10.8	-	@7 000	-	34°47'56.0"N 127°29'55.0"E	-	RNAV 1	-
005	TF	BUGYO	-	344(336.0)	4.9	-	@5 000	-	34°52'26.0"N 127°27'29.0"E	-	RNAV 1	-
006	TF	YEONA	-	343(335.1)	5.1	-	+5 000	-	34°57'03.8"N 127°24'52.1"E	-	RNAV 1	IAF

RNAV TEDAN 1E												
Serial Number	Path Descriptor	Waypoint Identifier	Fly-over	Course/Track °M(°T)	Distance (NM)	Turn direction	Altitude (ft)	Speed (kt)	Coordinates	VPA/RDH	Navigation specification	Remarks
001	IF	TEDAN	-	-	-	-	-	-	35°07'43.8"N 127°18'52.1"E	-	RNAV 1	-
002	TF	SKOTA	-	109(100.7)	8.8	-	+5 000	-	35°06'04.9"N 127°29'24.2"E	-	RNAV 1	IAF

HOLDING PROCEDURE												
Holding Identification	Path Descriptor	Waypoint Identifier	Fly-over	Course/Track °M(°T)	Distance (NM)	Turn direction	Altitude (ft)	Speed (kt)	Coordinates	VPA/RDH	Navigation specification	Remarks
RNAV TEDAN 1D	HM	YEONA	Y	311(302.6)	1	L	@5 000	-200	34°57'03.8"N 127°24'52.1"E	-	RNAV 1	-
RNAV NISAV 1D	HM	YEONA	Y	311(302.6)	1	L	@5 000	-200	34°57'03.8"N 127°24'52.1"E	-	RNAV 1	-
RNAV TEDAN 1E	HM	SKOTA	Y	146(138.0)	1	R	@5 000	-200	35°06'04.9"N 127°29'24.2"E	-	RNAV 1	-

Change : Establishment of standard instrument arrival procedure(RNAV TEDAN 1E).

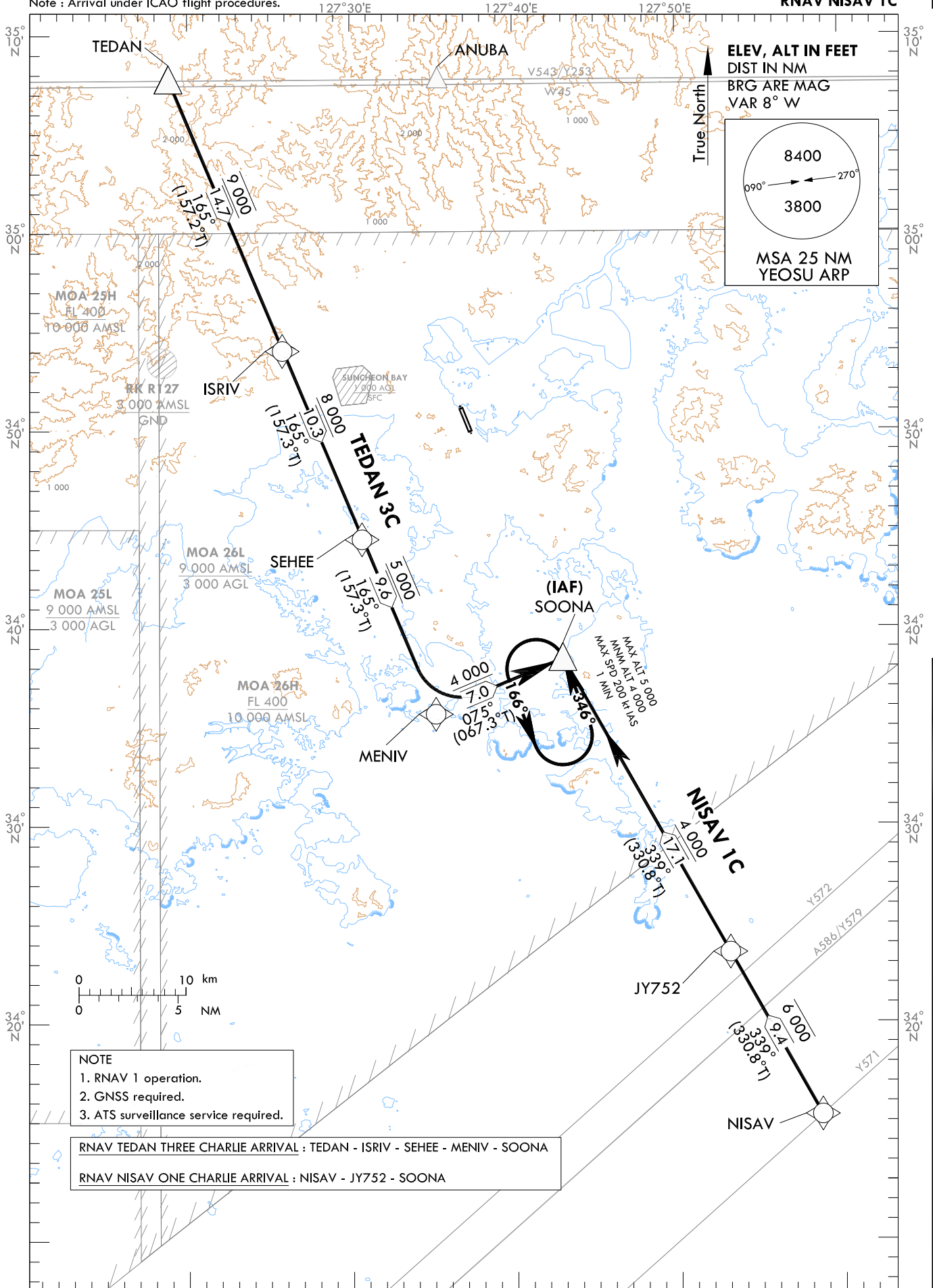
**STANDARD ARRIVAL CHART  
INSTRUMENT(STAR) - ICAO**

TRANSITION ALT 14 000  
TRANSITION LVL FL 140

SACHEON APP 135.4  
YEOSU TWR 122.5  
240.9

**YEOSU/Yeosu(RKJY)**  
RWY 35  
RNAV TEDAN 3C  
RNAV NISAV 1C

Note : Arrival under ICAO flight procedures.



- NOTE**
1. RNAV 1 operation.
  2. GNSS required.
  3. ATS surveillance service required.

RNAV TEDAN THREE CHARLIE ARRIVAL : TEDAN - ISRIV - SEHEE - MENIV - SOONA  
RNAV NISAV ONE CHARLIE ARRIVAL : NISAV - JY752 - SOONA

Change : Information of standard instrument arrival procedure for RWY 35(RNAV GOSBO 5C → RNAV NISAV 1C).

YEOSU/Yeosu(RKJY)  
RWY 35

RNAV TEDAN 3C, RNAV NISAV 1C  
HOLDING PROCEDURE

AERONAUTICAL DATA TABULATION

Standard Instrument Arrival Procedure Coding Tables

RNAV TEDAN 3C												
Serial Number	Path Descriptor	Waypoint Identifier	Fly-over	Course/Track °M(T)	Distance (NM)	Turn direction	Altitude (ft)	Speed (kt)	Coordinates	VPA/RDH	Navigation specification	Remarks
001	IF	TEDAN	-	-	-	-	-	-	35°07'43.8"N 127°18'52.1"E	-	RNAV 1	-
002	TF	ISRIV	-	165(157.2)	14.7	-	@9 000	-	34°54'10.0"N 127°25'48.0"E	-	RNAV 1	-
003	TF	SEHEE	-	165(157.3)	10.3	-	+8 000	-	34°44'37.0"N 127°30'39.0"E	-	RNAV 1	-
004	TF	MENIV	-	165(157.3)	9.6	-	@5 000	-	34°35'46.2"N 127°35'07.9"E	-	RNAV 1	-
005	TF	SOONA	-	075(067.3)	7.0	-	+4 000	-	34°38'27.5"N 127°42'56.0"E	-	RNAV 1	IAF

RNAV NISAV 1C												
Serial Number	Path Descriptor	Waypoint Identifier	Fly-over	Course/Track °M(T)	Distance (NM)	Turn direction	Altitude (ft)	Speed (kt)	Coordinates	VPA/RDH	Navigation specification	Remarks
001	IF	NISAV	-	-	-	-	-	-	34°15'19.1"N 127°58'35.0"E	-	RNAV 1	-
002	TF	JY752	-	339(330.8)	9.4	-	-6 000	-	34°23'33.2"N 127°53'02.0"E	-	RNAV 1	-
003	TF	SOONA	-	339(330.8)	17.1	-	+4 000	-	34°38'27.5"N 127°42'56.0"E	-	RNAV 1	IAF

HOLDING PROCEDURE												
Holding Identification	Path Descriptor	Waypoint Identifier	Fly-over	Course/Track °M(T)	Distance (NM)	Turn direction	Altitude (ft)	Speed (kt)	Coordinates	VPA/RDH	Navigation specification	Remarks
RNAV TEDAN 3C	HM	SOONA	Y	346(338.5)	1	L	-4 000 +5 000	-200	34°38'27.5"N 127°42'56.0"E	-	RNAV 1	-
RNAV NISAV 1C	HM	SOONA	Y	346(338.5)	1	L	-4 000 +5 000	-200	34°38'27.5"N 127°42'56.0"E	-	RNAV 1	-

Change : Information of standard instrument arrival procedure for RWY 35(RNAV GOSBO 5C → RNAV NISAV 1C).